

7-7

2000 max

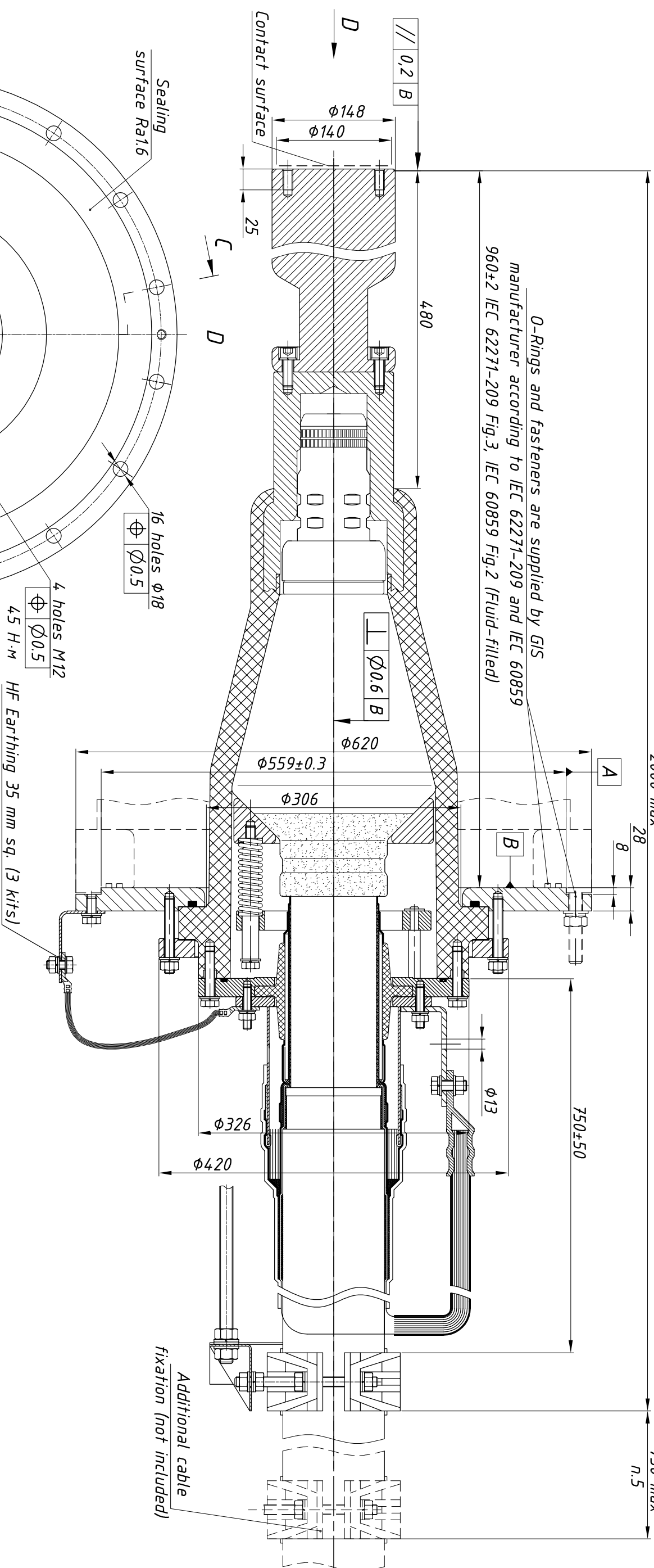
28

3




750 max
n.5

7.3

O-Rings and fasteners are supplied by GIS manufacturer according to IEC 62271-209 and IEC 60859 960±2 IEC 62271-209 Fig.3, IEC 60859 Fig.2 (Fluid-filled)



1. Dimensions and scope of supply according to IEC 62271-209 Fig.3 and IEC 60859 Fig.2 (Fluid filled type).
2. Conductor cross section range, mm sq.:
crimping (-): Cu 400-2500; Al 400-500;
screwing (B): Al 400-1000;
welding (M): Al 1200-2500.
3. Insulation diameter range (prepared): 64-112 mm.
4. Maximal cable oversheath diameter - 130 mm.
5. Cable shall be fixed additionally to metal framework at least once coaxially with the GIS enclosure not further than 1200 mm from GIS flange. Additional fixation is not included to the scope of supply.
6. HF earthings shall be connected directly to GIS flange (if possible) removing any coating and degreasing contact zones. Otherwise connect HS earthings to M12 holes of interface flange (see view D). HF earthings (3 kits x 35 mm sq.) are included to the scope of supply.
7. Maximum system voltage - 252 kV.

						AKS.229.000.000 SV
Chan. Sheet	Document #	Signature	Date			
Develop	Khoroshilov A.		20.09.19			
Check	Terekhov E.		20.09.19			
Approve	Kiriyukhin D.		20.09.19			
				Simple view		
				Arkasil SK LLC		