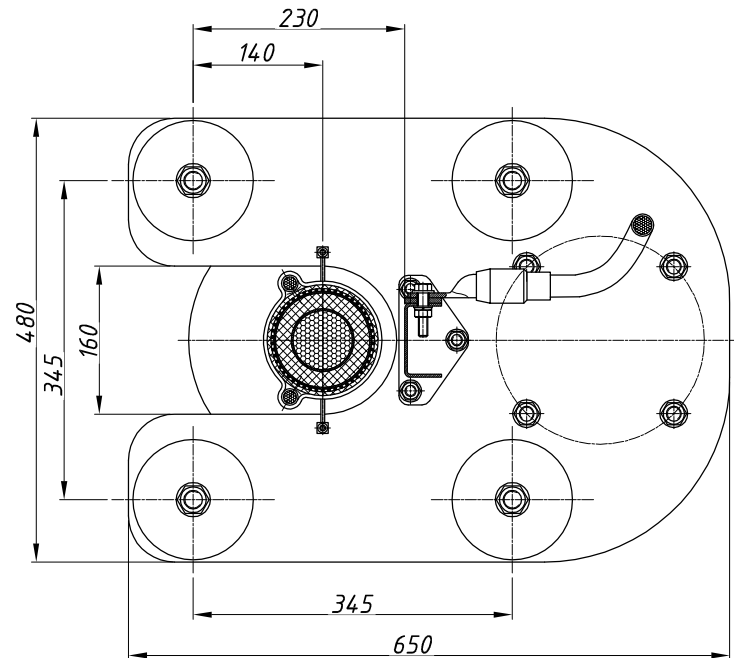
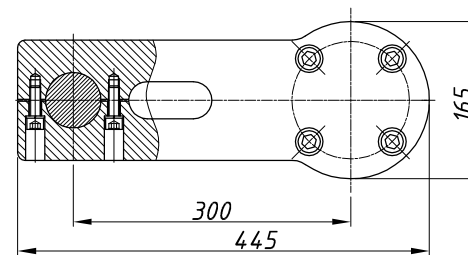


A-A (Base plate)



B (Cantilever)



1. Conductor cross section range is determined according to allowable insulation diameter range (see n.2). Connection by crimping (-), welding (M) or screws (B) is available.
2. Insulation diameter range (prepared): 44-91 mm.
3. Maximal overall cable diameter - 125 mm.
4. Maximal allowable inclination angle - 90°.
5. Minimal creepage distance - 4365 mm.
6. Maximal cantilever load - 5 kN (including gravity in inclined position).
7. Screen wires shall be terminated by a cable lug (included) and fixed at the contact pad of the cable holder. In case if screen cross section exceeds 185 mm sq. it shall be divided into 2 approximately same bundles. Each bundle shall be routed separately to the contact pad. External earthing shall be connected to the contact pad of the cable holder to the nearest vacant hole. Fasteners for external earthing connection are included to the scope of supply.
8. Cable shall be additionally fixed on a metal structure at least once by a non-magnetic cable clamp 200..1000 mm below the cable holder.
9. Maximum system voltage $U_m = 126$ kV.

Chan. Sheet	Doc. #	Sign.	Date
Develop	Khoroshilov	<i>[Signature]</i>	2020.03.26
Check	Terekhov	<i>[Signature]</i>	2020.03.26
Approve	Kintyukhin	<i>[Signature]</i>	2020.03.26

AKS.457.100.000 SV

MKBC 126 0
345x345

Simple view

Letter	Mass	Scale
	80	1:5
Sheet	Sheets 1	

Arkasil SK LLC