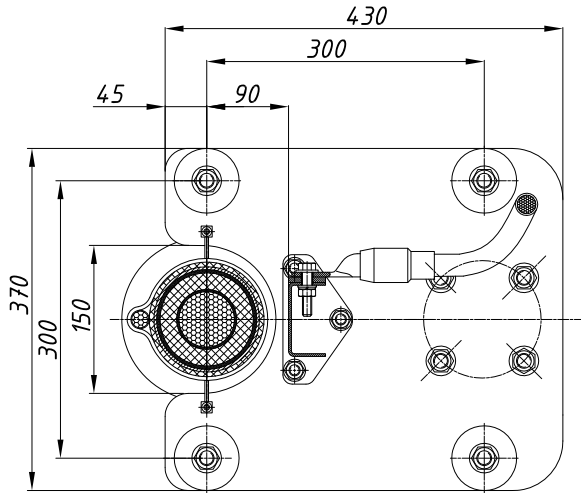
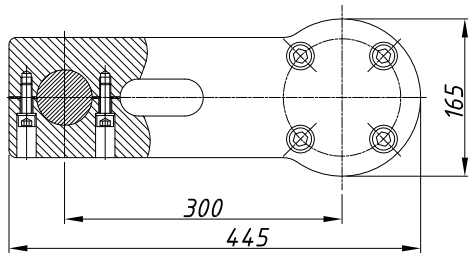


A-A (Base plate)



B (Cantilever)



Conductor size, mm sq.	through 500	above 500
φD, mm	40	50

1. Conductor cross section range is determined according to allowable insulation diameter range (see n.2). Connection by crimping (-), welding (M) or screws (B) is available.
2. Insulation diameter range (prepared): 32-74 mm.
3. Maximal overall cable diameter - 125 mm.
4. Maximal allowable inclination angle - 90°.
5. Minimal creepage distance - 1850 mm (pollution level III according to IEC 60815).
6. Maximal cantilever load - 2.5 kN (including gravity in case of inclined orientation).
7. Screen wires shall be terminated by a cable lug (included) and fixed at the contact pad of the cable holder. In case if screen cross section exceeds 185 mm sq. it shall be divided into 2 approximately same bundles. Each bundle shall be routed separately to the contact pad. External earthing shall be connected to the contact pad of the cable holder to the nearest vacant hole. Fasteners for external earthing connection are included to the scope of supply.
8. Cable shall be additionally fixed on a metal structure at least once by a non-magnetic cable clamp 200..1000 mm below the cable holder.
9. Maximum system voltage Um = 72.5 kV.

Chan.	Sheet	Doc. #	Sign.	Date
Develop		Khoroshilov		2020.12.10
Check		Terekhov		2020.12.10
Approve		Kintyukhin		2020.12.10

AKS.419.100.000 SV

MKBC 72.5 B - 1850

Simple view

Letter	Mass	Scale
	60	1:5
Sheet	Sheets 1	

Arkasil SK LLC